

RESPOND  
FULL  
FORCE

HI-SERIES™ SNOW TRACTOR

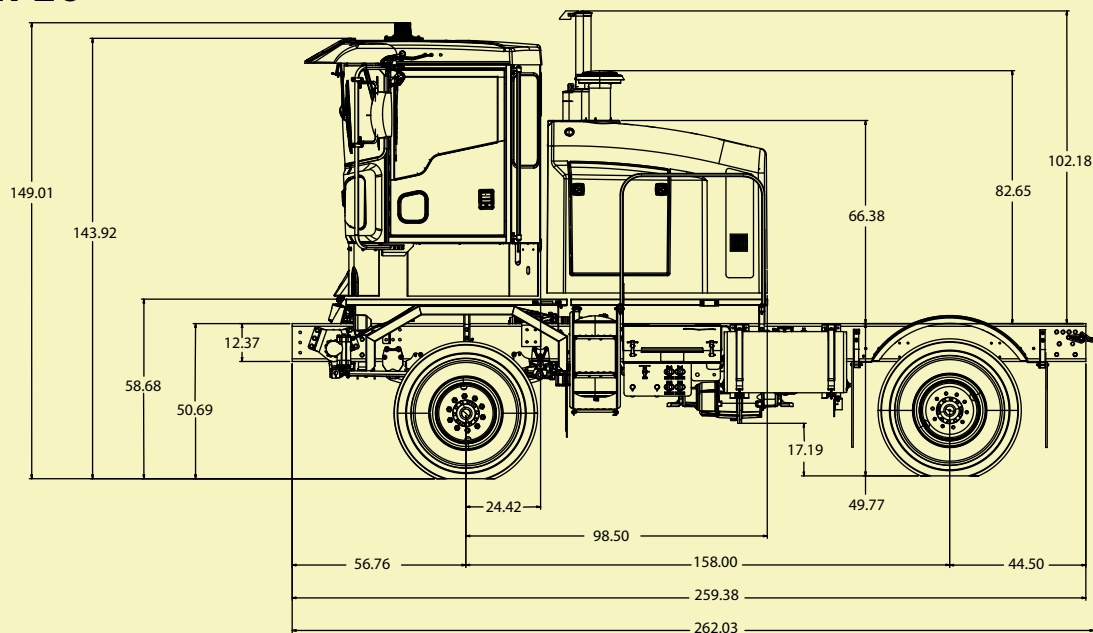


SPECS

OSHKOSH

# OSHKOSH® HT-SERIES™ SNOW TRACTOR

## MODEL HT2723



### CHASSIS SPECIFICATIONS:

#### AIR CLEANER

**Type:** Dry, two-stage with safety element  
■ Underhood/outside air intake selector

#### AXLE, Front

**Make & Type:** Oshkosh Model 27K, single reduction with special heat-treated alloy steel shafts, driver-controlled traction differential and Oshkosh cage ring type steering ends  
**Ratio:** 6.17:1

#### AXLE, Rear

**Make & Model:** Eaton 231S2, full floating, single reduction with special heat-treated alloy steel shafts and driver-controlled traction differential  
**Ratio:** 6.14:1

#### AIR BRAKES, PARKING AND EMERGENCY

**Type:** Spring, mounted on rear axle  
**Secondary Emergency System:** Modulated split type ■ Auxiliary air inlet, left side ■ Quick drain lanyards on all tanks

#### BRAKES, SERVICE

**Type:** Dual system, air operated mechanical, Electronic Antilock Brake System (4S4M)  
**Front:** 16.5 x 7 in [419 x 179 mm] S-cam rotary  
**Rear:** 16.5 x 7 in [419 x 179 mm] S-cam rotary  
**Compressor:** 15.7 cfm

#### CAB CONSTRUCTION

Oshkosh extra heavy duty ■ Corrosion resistant Aluminum body with fiberglass roof and fascia ■ Full-length stainless steel piano type door hinges ■ Fully rustproofed ■ One piece panoramic reverse slope windshield ■ Power windows left and right ■ Stationary rear windows (3) ■ Dome lights (2) ■ Courtesy entry lights (2) ■ Tinted safety glass ■ 70 inch cab width ■ Three-point rubber mount ■ Cab-over construction with flat floor

#### STANDARD ACCESSORIES

Electric horn ■ National® Standard Plus air ride driver's seat, right of center ■ Fold up cloth passenger jump seat ■ 55,000 BTU heater/defroster ■ Digital Climate Control ■ Cigar lighter (1) ■ 12 volt Power outlet (1) ■ Cup holders (2) ■ Doors, locking (2) ■ Ashtray ■ Electronic engine controls with on-board diagnostic connection ■ Electric remote control heated West Coast type mirrors with separate remote adjustable heated spotter mirrors ■ Ether starting aid, thermally protected, ignition switch activated ■ Keyed chassis engine ■ Floor mat ■ Fresh air type heater and defroster ■ Grab Handles ■ LCD dash display ■ Light bars ■ Quad electric windshield wipers mounted above windshield with intermittent speed control ■ Self-canceling turn signals ■ Side window defrosters ■ Sun visor, full width exterior front ■ Tilt/telescoping steering wheel ■ Windshield washer, 6 quarts ■ Three point seat belts ■ High idle cruise control ■ Digital clock

#### CHASSIS EQUIPMENT

Air dryer ■ Backup alarm ■ Crankshaft PTO adapter ■ Dual 75 gal [284 liter] fuel tanks ■ Flat top steel fenders front; snow shedding radial polymer fenders rear ■ Catwalks to cab and maintenance access ■ Heated fuel/water separator ■ Mud flaps front and rear of rear tires ■ Molded fiberglass enclosure behind cab with removable side doors for cooling and chassis systems protection ■ Vertical exhaust ■ Maintenance/daily check cluster; left hand side

#### INSTRUMENTATION

**Oshkosh Command Zone™ LCD dash pod on steering column** ■ Speedometer ■ Odometer ■ Tachometer ■ Hourmeter (registering engine run hours) ■ Voltmeter ■ Air system pressure

(dual system) ■ Fuel Level with low fuel level warning ■ Warning Icons for: Low Air Pressure, ABS Fail / ABS Communication lost / Engine communication lost / Engine stop / Engine fail mode / Low voltage / Engine overheat / Engine low oil pressure / Transmission overheat – Transmission fail / Transmission communication lost / Hydraulic temperature / Hydraulic fluid level / Parking brake applied / Low transmission oil sensor / Transfer case range / Traction enhancement locked-unlocked / Transmission gear selection

#### COOLING SYSTEM

**Radiator Core:** Fin and tube type with built-in deaeration system • Horizontal flow  
**Frontal Area:** 2,143 in<sup>2</sup> [5,443cm<sup>2</sup>]  
**Radiator Construction:** Bolted, with built-in deaeration system  
**Charge Air Cooler:** Cooling flow parallel to radiator  
**Fan:** Temperature controlled hydrostatic fan drive

#### DRIVE ENGINE

**Make & Type:** Caterpillar, C-13 ACERT, in-line 6 cylinder, four cycle  
**Displacement:** 763 in<sup>3</sup> [12.5 L]  
**Horsepower:** 470 @ 2100 RPM; 485 @ 1800 RPM  
**Peak Torque:** 1,650 @ 1,600 rpm  
**Governed RPM:** 2100

#### ELECTRICAL SYSTEM

**Alternator:** 145 amp, chassis engine driven  
**Lighting:** 12 volt  
**Starting:** 12 volt  
**Battery:** Four 12 volt, 950 CCA each @ 0°F [-18°C] (3800 CCA total) • Battery disconnect at battery box • Battery charger, 1-1/2 amp trickle type • Jumper lugs at battery box

## FRAME

**Material:** Carbon manganese steel, heat-treated  
**Type:** Single formed channel  
**Size:** 12.38 x 3.88 x .38 in [314 x 98 x 9.5 mm]  
**Yield Strength:** 120,000 psi [827 Mpa] minimum  
**Tapered Section Modulus:** 19.67 to 23.4 in<sup>3</sup> [322.34 to 384.94 cm<sup>3</sup>] per rail  
**RBM:** 2,818,000 in-lb per rail  
**Construction:** Grade 8 flanged bolts and flanged locknuts  
**Front Frame:** DIN Adapter Plate  
**Rear Tow Hooks:** Two  
**Side Drain Kit**

## LIGHTING

Cab-mounted headlights with turn signals  
■ Clearance and marker lights to comply with federal regulations  
■ Lighting in enclosure for coolant and chassis systems  
■ Fender-mounted headlights and turn signals  
■ Roof-mounted strobe light  
■ Dual back-up lights  
■ Dual stop, tail, turn signal lights (LED) at rear

## PAINT

Acrylic urethane ■ Epoxy primer ■ One color from Oshkosh standard color chart

## PROPELLER SHAFTS

**Make & Type:** Dana 1710 Series  
**Dynamically balanced**  
**Splines:** "Glidecoat" treated

## STEERING SYSTEM

**Make & Type:** Sheppard D120 integral hydraulic power gear (with M90 slave for 29K front)  
**Chassis Hydraulics Warning System:** Low level/high temperature

## SUSPENSION

**Front:** **Type:** Hotchkiss, semi-elliptic spring  
**Main:** 7 leaf, 48 x 3 in [1,219 x 76 mm]  
**Auxiliary:** 5 leaf, 39.63 x 3 in [1,006 x 76 mm]  
**Rating:** 27,000 lb [12,247 kg]

**Rear:** **Type:** Hotchkiss, semi-elliptic spring  
**Main:** 7 leaf, 48 x 3 in [1,219 x 76 mm]  
**Auxiliary:** 5 leaf, 39.63 in [1,006 x 76 mm]  
**Rating:** 23,000 lb [10,445 kg]

## TIRES

**Make & Tread:** Michelin XZL  
**Size:** 395/85R20

## TRANSFER CASE\*

**Make & Model:** Oshkosh 55000 Series, front axle declutch  
**Speeds:** Two  
**Ratios:** 2.66:1 and 0.98:1  
\*Versions are available with bevel gear center differential with driver-controlled lock, or automatic (Dorr-Miller) differential

## TRANSMISSION

ALLISON® GEN IV 4-speed electronic  
1st .....3.51:1      Reverse .....4.80:1  
2nd .....1.91:1  
3rd .....1.43:1  
4th .....1.00:1

## VEHICLE RATINGS

**Ratings at Axle Hubs:**  
**Front:** 27,000 lb [12,247 kg]  
**Rear:** 23,000 lb [10,455 kg]  
**Total:** - 50,000 lb [22,727 kg]

## WHEELBASE

158in [4,013 mm]

## WHEELS

**Type:** Steel Disc  
**Size:** 20.00 x 10.00 in

## CHASSIS OPTIONS\*

**Accessories:** Air conditioning ■ Auxiliary heater  
■ Heated side window wipers ■ Heated front wipers (n/a with heated windshield) ■ National Premium heated driver's seat with 3-way air adjustable lumbar support ■ Air ride seat for passenger ■ AM/FM radio with weather band & CD player ■ Deluge system ■ Heated windshield  
■ Lubrication data plate

**Attachments:** Displacement plow packages  
■ Underbody scraper ■ Fifth Wheel for various

towed attachments ■ Dump bodies ■ Material spreaders

**Drive Train:** Caterpillar® C-13 engines rated at 380 HP (1,450 lb/ft torque), 470 HP (1,550 lb/ft torque) ■ Allison® GEN IV 4500 transmission ■ 29K front axle ■ 26K rear axle; 46K, 52K or 58K rear tandem axle ■ ALL STEER® electronic all-wheel steering system (23K or 26K rear single axle; 46K or 52K rear tandem axle) ■ Driver controlled and automatic lock/unlock transfer case differentials

**Electrical System:** 160 amp high-output alternator ■ HID and other lighting  
■ On-board battery charger, 20 amp self regulating

**Frame & Chassis:** Single side fuel fill  
■ 110-volt in-tank fuel heater ■ Pintle hitch

**Tires & Wheels:** 16R20 Michelin XZL  
■ Spare tires & wheels

**Winterization:** Engine block heater, 1500 watts  
■ Battery heater, 300 watts ■ In-tank fuel heater

\* Consult factory for complete option list and option compatibility. Other engine ratings may be available.



2307 Oregon Street, P.O. Box 2566, Oshkosh, WI 54903-2566 920-235-9150

[www.oshkoshsnow.com](http://www.oshkoshsnow.com)

© 2008 Oshkosh Corporation. Oshkosh and ALL STEER are registered trademarks and Command Zone and HT-Series are trademarks of Oshkosh Corporation, Oshkosh, WI, USA. All other trademarks are the property of their respective owners. For reference only. The addition of options will change the listed standard dimensions and weights in some cases. For certified dimensions and weights, consult Oshkosh Corporation. Specifications, descriptions and illustrations in this literature are as accurate as known at the time of publication but are subject to change without notice. Ratings are general guidelines. Actual ratings vary with application and duty cycle. Illustrations might include optional equipment and accessories but might not include all standard equipment. Consult Oshkosh Corporation for additional information.

HT-Series Spec 2.5M 2/08